



WILLIAM COOK

fine antique furniture, objects
and works of art

A view of one of the showrooms in our Hungerford shop showing our varied range of fine furniture, objects and works of art





Antique Fairs 2010

AIFAF

Florida, USA

2nd - 7th February

Palm Beach Antique & Jewellery Show

Florida, USA

12th - 16th February

Alexandria Antique Show

Washington, USA

11th - 14th March

Chicago Antique Show

Illinois, USA

29th April - 3rd May

LAPADA Show

London, UK

22nd - 26th September

Harrogate Show (BADA)

Yorkshire, UK

1st - 5th October

Theta Show, Houston

Texas, USA

17th - 21st November

*for other possible dates
please check website*

WILLIAM COOK

— Hungerford —

With the recent opening of our new premises in the historic market town of Hungerford, it is with great pleasure that we present this short catalogue illustrating both the shop and some selected pieces that are currently held in stock. The shop offers a selection of fine antique furniture, objects and accessories all of which have been selected for their quality, originality and colour. Further details and images can be found on our web site www.williamcookantiques.com

Should you require further information or not see what you are looking for in this brochure, please do not hesitate to contact us. Also listed opposite are the dates of our planned Shows for 2010 both here in England and in America. I look forward to welcoming you personally to either our shop in Hungerford or one of our exhibition stands.

Billy Cook.





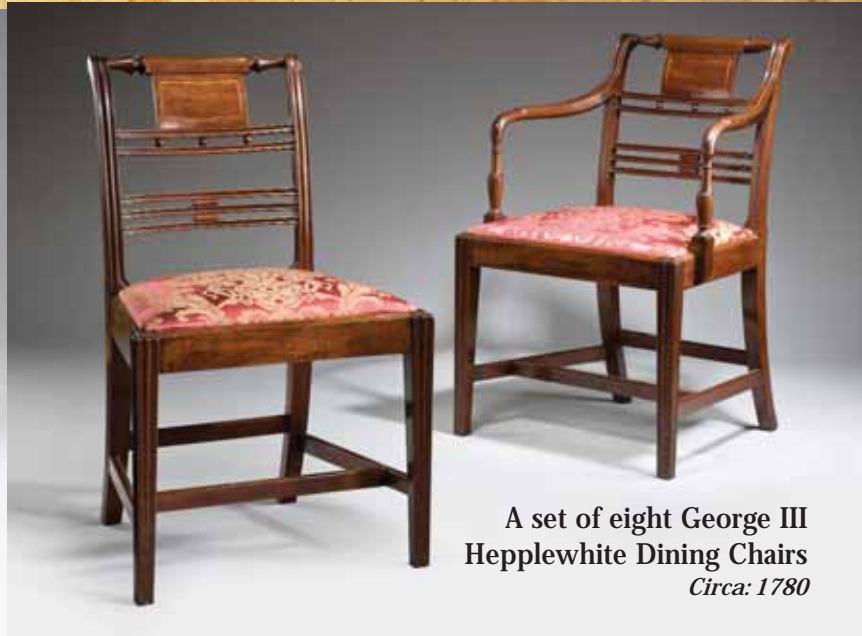
A Large Regency Period Dining Table

*Height: 28 inches Width: 54 inches Length: 152 inches
Length: (illustrated) 120 inches Circa: 1810*

Made from well figured Cuban mahogany, the table retains all its original plum pudding figured leaves. Standing on elegant reeded legs, the table is of superb quality and colour. Currently shown, the table measures 120 inches and will seat twelve but when the extra two original sixteen inch leaves are fitted it will seat sixteen.

A highly figured & large Regency Cellaret

*Height: 23 inches Width: 31 inches
Circa: 1815*



**A set of eight George III
Hepplewhite Dining Chairs**
Circa: 1780

A wealth of period interior architectural features offers the ideal backdrop for displaying our fine antique furniture and objects.



Visitors will always be assured of a warm welcome, courteous service and a varied selection of fine antiques and objects.



A Magnificent Model Tudor House

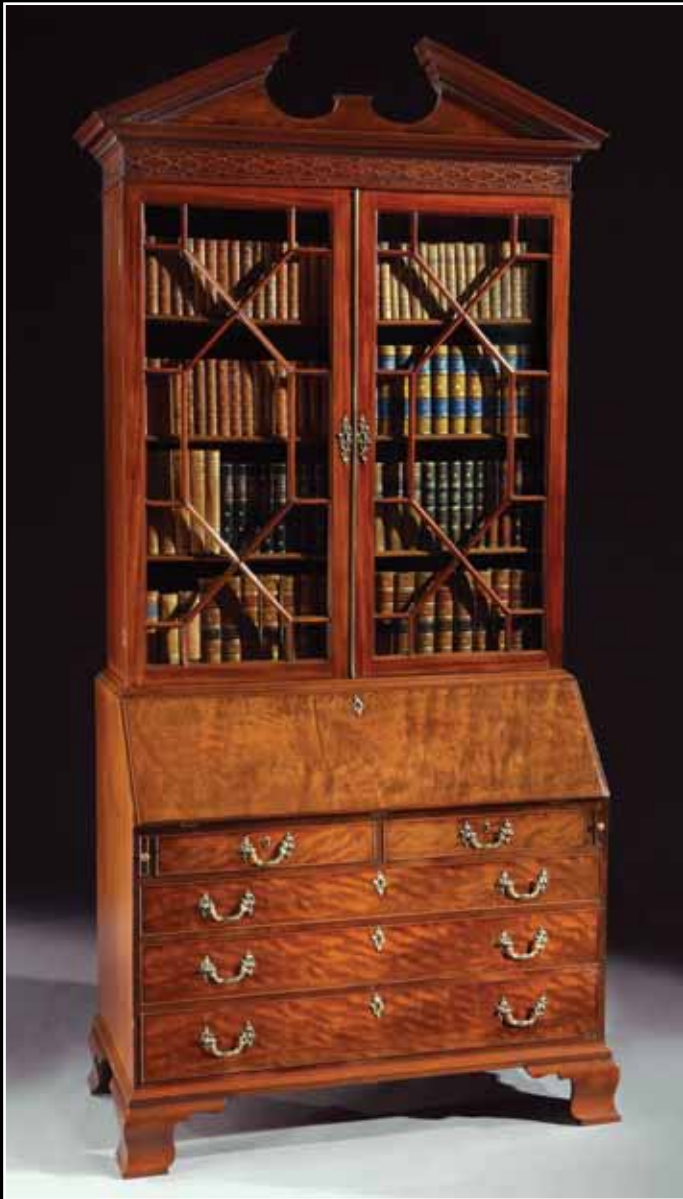
Height: 25 inches Width: 30 inches Depth: 30 inches Circa: 1930

A museum quality model Tudor House that is architecturally correct throughout and that retains the original fixtures, fittings and furniture. Purchased from a private collection in the United States, with the outstanding level of detail executed in the making, it is logical to assume that this model was commissioned by a museum to illustrate an important house of the Tudor period.



*The Great Hall (illustrated right),
was the focal point of an important
Tudor House.*





A George III Bureau Bookcase

Original throughout and of excellent quality, the bookcase is made from Cuban mahogany and has a pediment top.

Height: 110 inches Width: 48 inches Depth: 24 inches

Circa: 1770



A Regency Period Centre Pillar Sofa Table

Made from well figured cuban mahogany and of excellent colour and patination. *Attributed to Gillow of Lancaster*

Height: 29 inches Width: 59 inches Depth: 24 inches

Circa: 1810



A Rare Large American Civil War Period Union Flag

A 35 star wool sewn Civil War flag with hand sewn cotton stars. Possibly a Union army signal flag.

Length: 79 inches Height: 48 inches Circa: 1863-1865

A Rare George I st Walnut Wing Chair

Circa 1720

Dating from the early eighteenth century, the chair is of elegant form and the cabriole legs are carved with a foliate theme and terminate with claw and ball feet. Of generous and bold proportion, the seat and back are upholstered in early eighteenth century crewel work with a contrasting fabric to the outer arms and back. The color and patination are both excellent and without question this chair is a superb example.

Wing chairs first appeared during the latter part of the seventeenth century. It is unusual to find such chairs that have cabriole legs all round and rarer still to find examples with such wonderfully carved front legs. The foliate themed carved decoration is balanced with bold claw & ball feet that have inset casters. The chair retains its original internal seat rails (photographic evidence available).

Crewelworks, which were worked from dyed wools were produced from the late seventeenth century onwards and were used as wall and bed hangings. Vibrant in color and design they often contained the central theme of the tree of life and this can be seen in the crewel work used on this chair.





A Rare William & Mary period Mulberry Veneered Chest on Stand.

Veneered in highly figured burr mulberry and with walnut cross bandings to the drawer fronts, the chest on stand retains its original elm cabriole legs. The walnut veneered sides are also banded in burr mulberry and the deep base drawer sits above a shaped frieze. Dating from the beginning of the William & Mary period, this piece is an outstanding example of its type. Over the past three hundred years it has developed a wonderful leather like patinated surface and deep rich colour.

Mulberry is one of the rarest timbers used during the late seventeenth century and without question when originally commissioned circa 1685, this piece would have stood in an important Manor House.

*Height: 65 inches
Width: 38 inches
Depth: 21 inches
Circa: 1685*



Our furniture, objects and works of art,
are carefully selected for their quality,
colour and patination.





**A William & Mary period
Oyster Chest
of Drawers**

Veneered in olive wood oysters and inlaid with box wood stringing, the chest is of superb colour, quality and patination.

*Height: 35 inches
Width: 37 inches
Depth: 22 inches
Circa: 1690*

**A George III Tortoiseshell
Tea Caddy**

Original throughout and with twin interior lids, the caddy is of excellent quality and colour.

*Length: 8 inches
Height: 5 inches
Circa: 1790*



WILLIAM COOK

15 Bridge Street, Hungerford, Berkshire RG17 0EG (UK)
tel +44 (0) 1488 681 254 mobile +44 (0) 7885 031 301
US cell 773 469 1458

web www.williamcookantiques.com
email info@williamcookantiques.com

